

DISTRIBUIDORES HIDRÁULICOS

Hydraulic directional control valves

Distributeurs hydrauliques

Distributori idraulici



FM35 c/limitadora accionam. manual y retorno por muelle a posición central

FM35+relief valve. Manual operator, return to center by spring

FM35 avec limit. pression.Commande manuelle, retour au centre par ressort

FM35 con valv. max., az. man. e ritorno a molla pos. centr.

Referencia Part n°	ROSCA THREAD	CAUDAL MÁX. (l/min) MAX. FLOW (l/min)	PRESIÓN MÁX. (bar) MAX. PRESSURE (bar)	Nº PALANCAS LEVERS	€
FM35/1 3/8 1P DE	3/8" BSP	35	300	1	177,12
FM35/1 3/8 1P M	3/8" BSP	35	300	1	177,12
FM35/1 3/8 1P SE	3/8" BSP	35	300	1	176,99
FM35/2 3/8 2P DD	3/8" BSP	35	300	2	279,79
FM35/2 3/8 2P DS	3/8" BSP	35	300	2	279,79
FM35/2 3/8 2P SS	3/8" BSP	35	300	2	295,43
FM35/3 3/8 3P DDD	3/8" BSP	35	300	3	385,29
FM35/3 3/8 3P DDS	3/8" BSP	35	300	3	407,55
FM35/3 3/8 3P DSS	3/8" BSP	35	300	3	407,55
FM35/4 3/8 4P DDDD	3/8" BSP	35	300	4	490,04
FM35/4 3/8 4P DDDS	3/8" BSP	35	300	4	508,72
FM35/4 3/8 4P DDSS	3/8" BSP	35	300	4	517,89
FM35/5 3/8 5P DDDDD	3/8" BSP	35	300	5	594,41
FM35/6 3/8 6P DDDDDD	3/8" BSP	35	300	6	740,35

SE/S= Simple efecto, DE/D= Doble efecto / SE/S= Single acting, DE/D= Double acting / SE/S= Simple effet, DE/D= Double effet / SE/S=Semplice effetto, DE/D= Doppio effetto



FM55 c/limitadora accionam. manual y retorno por muelle a posición central

FM55+relief valve. Manual operator, return to center by spring

FM55 avec limit. pression.Commande manuelle, retour au centre par ressort

FM55 con valv. max., az. man. e ritorno a molla pos. centr.

Referencia Part n°	ROSCA THREAD	CAUDAL MÁX.(l/min) MAX. FLOW (l/min)	PRESIÓN MÁX. (bar) MAX. PRESSURE (bar)	Nº PALANCAS LEVERS	€
FM55/1 1/2 1P DE	1/2" BSP	70	300	1	218,97
FM55/1 1/2 1P SE	1/2" BSP	70	300	1	219,17
FM55/2 1/2 2P DD	1/2" BSP	70	300	2	331,56
FM55/2 1/2 2P DS	1/2" BSP	70	300	2	350,60
FM55/3 1/2 3P DDD	1/2" BSP	70	300	3	446,40
FM55/3 1/2 3P DDS	1/2" BSP	70	300	3	446,40
FM55/3 1/2 3P DSS	1/2" BSP	70	300	3	471,62
FM55/4 1/2 4P DDDD	1/2" BSP	70	300	4	558,83
FM55/4 1/2 4P DDDS	1/2" BSP	70	300	4	558,83
FM55/4 1/2 4P DDSS	1/2" BSP	70	300	4	590,86
FM55/5 1/2 5P DDDDD	1/2" BSP	70	300	5	711,87
FM55/6 1/2 6P DDDDDD	1/2" BSP	70	300	6	777,14

SE/S= Simple efecto, DE/D= Doble efecto / SE/S= Single acting, DE/D= Double acting / SE/S= Simple effet, DE/D= Double effet / SE/S=Semplice effetto, DE/D= Doppio effetto



FM85 c/limitadora accionam. manual y retorno por muelle a posición central

FM85+relief valve. Manual operator, return to center by spring

FM85 avec limit. pression.Commande manuelle, retour au centre par ressort

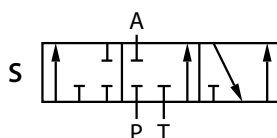
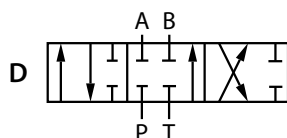
FM85 con valv. max., az. man. e ritorno a molla pos. centr.

Referencia Part n°	ROSCA THREAD	CAUDAL MÁX.(l/min) MAX. FLOW (l/min)	PRESIÓN MÁX. (bar) MAX. PRESSURE (bar)	Nº PALANCAS LEVERS	€
FM85/1 3/4 1P D.E.	3/4" BSP	100	320	1	323,47
FM85/1 3/4 1P S.E.	3/4" BSP	100	320	1	323,47
FM85/2 3/4 2P DD	3/4" BSP	100	320	2	454,46
FM85/2 3/4 2P DS	3/4" BSP	100	320	2	480,52
FM85/3 3/4 3P DDD	3/4" BSP	100	320	3	585,49
FM85/3 3/4 3P DDS	3/4" BSP	100	320	3	619,33

SE/S= Simple efecto, DE/D= Doble efecto / SE/S= Single acting, DE/D= Double acting / SE/S= Simple effet, DE/D= Double effet / SE/S=Semplice effetto, DE/D= Doppio effetto

Doble efecto / Double acting

Simple efecto / Single acting



DISTRIBUIDORES HIDRÁULICOS

Hydraulic directional control valves

Distributeurs hydrauliques

Distributori idraulici

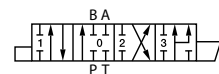


Modelo BM 45 (45l/min) cort.leña.

BM 45 type (45 l/min) - log splitter

Type BM45 (45 l/min) - Fendeuse à bois

Modello BM 45 (45 l/min) - taglia legna



Referencia Part n°	ROSCA THREAD	CAUDAL MÁX. (l/min) MAX. FLOW (l/min)	PRESIÓN MÁX. (bar) MAX. PRESSURE (bar)	N° PALANCAS LEVERS	€
BM45/1 CORT LENA	1/2" BSP	45	250	1	245,00

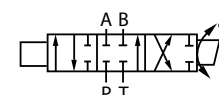
Corredera 4 vías, 4 posiciones, tipo regenerativa / Spool 4 ways, 4 positions, regenerative type / Tiroir 4 voies, 4 positions, type regenerative / Spool 4 ways, 4 positions, regenerative type

Distribuidor rotativo corredera D.E. YFM

Rotary control valve closed center spool YFM

Distributeur rotatif centre fermé type YFM

Distributore rotativo cursore D.E. YFM



Referencia Part n°	ROSCA THREAD	CAUDAL MÁX. (l/min) MAX. FLOW (l/min)	PRESIÓN MÁX. (bar) MAX. PRESSURE (bar)	€
YFM45/1 1/2 DE ROT	1/2" BSP	45	300	304,99
YFM70/1 1/2 DE ROT	1/2" BSP	65	300	420,50
YFM100/1 3/4 DE ROT	3/4" BSP	90	300	508,31
YFM150/1 3/4 DE ROT	3/4" BSP	140	300	654,37

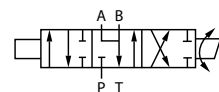
Tiene protección DACROMET contra corrosión en ambiente marino / With DACROMET protection against corrosion in marine environment / Avec protection DACROMET contre la corrosion en milieu marin / Con protezione DACROMET contro corrosione in ambiente marino

Distribuidor rotativo corredera motor YFM

Rotary control valve open center spool YFM

Distributeur rotatif centre ouvert type YFM

Distributore rotativo cursore motore YFM



Referencia Part n°	ROSCA THREAD	CAUDAL MÁX. (l/min) MAX. FLOW (l/min)	PRESIÓN MÁX. (bar) MAX. PRESSURE (bar)	€
YFM45/1 1/2 M ROT	1/2" BSP	45	300	304,99
YFM70/1 1/2 M ROT	1/2" BSP	65	300	434,75
YFM100/1 3/4 M ROT	3/4" BSP	90	300	559,33
YFM150/1 3/4 M ROT	3/4" BSP	140	300	654,37

Tiene protección DACROMET contra corrosión en ambiente marino / With DACROMET protection against corrosion in marine environment / Avec protection DACROMET contre la corrosion en milieu marin / Con protezione DACROMET contro corrosione in ambiente marino

DISTRIBUIDORES HIDRÁULICOS

Hydraulic directional control valves

Distributeurs hydrauliques

Distributori idraulici

Soporte palanca y accionamiento bm45 leña



Support lever and operator BM45 log splitter

Levier de support et opérateur BM45 fendeuse à bois

Supporto leva e azionamento BM45 taglia legna

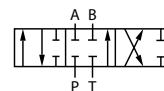
Referencia Part n°	DISTRIBUIDOR CONTROL VALVE	€
801065	BM45/1 CORT LENA / LOG SPLITTER	45,76

Corredera D.E

4-way / 3-position spool D.A.

Tiroirs D.E. 4 voies / 3 positions

Cursore doppio effetto 4 vie / 3 posizioni



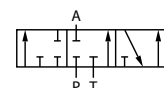
Referencia Part n°	DISTRIBUIDOR CONTROL VALVE	€
560429	FM35	30,41
560096	FM55 / BM30 / BM40/ BM50	56,12
560136	FM85 / BM70	62,48

Corredera S.E

3-way / 3-position spool S.A.

Tiroirs S.E. 3 voies / 3 positions

Cursore semplice effetto 3 vie / 3 posizioni



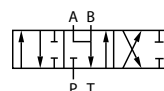
Referencia Part n°	DISTRIBUIDOR CONTROL VALVE	€
560430	FM35	29,27
560097	FM55 / BM30 / BM40/ BM50	36,29
560137	FM85 / BM70	46,21

Corredera motor

4 way / 3 position open center

4 voies / 3 positions centre ouvert

Cursore motore



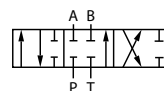
Referencia Part n°	DISTRIBUIDOR CONTROL VALVE	€
560431	FM35	32,92
560099	FM55 / BM30 / BM40/ BM50	35,95
560139	FM85 / BM70	45,79

Corredera para joystick D.E.

Spool for joystick D.A.

Tiroir pour joystick D.E.

Cursore per joystick doppio effetto



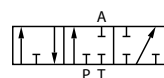
Referencia Part n°	DISTRIBUIDOR CONTROL VALVE	€
560111	FM55 / BM40 D.E./ D.A.	40,90

Corredera para joystick S.E.

Spool for joystick S.A.

Tiroir pour joystick S.E.

Cursore per joystick semplice effetto



Referencia Part n°	DISTRIBUIDOR CONTROL VALVE	€
560112	FM55 / BM40 S.E./ S.A.	55,88

DISTRIBUIDORES HIDRÁULICOS

Hydraulic directional control valves

Distributeurs hydrauliques

Distributori idraulici

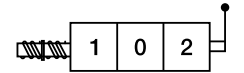
Accionamiento tipo 1 retorno muelle 3 pos



Spool control type 1 return to center by spring

Actionnement type 1 -retour par ressort 3 pos.

Azionamento tipo 1 ritorno a molla 3 posizioni



Referencia Part n°	DISTRIBUIDOR CONTROL VALVE	€
802049	FM35	9,81
802001	FM55 / BM30 / BM40	10,03
802015	FM85 / BM70	32,75

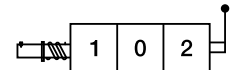
Accionamiento tipo 2 - enclavado 1 pos.



Spool control type 2 - 1 pos. detent

Actionnement type 2- cranté 1 pos.

Azionamento tipo 2 - bloccaggio 1 posizioni



Referencia Part n°	DISTRIBUIDOR CONTROL VALVE	€
802051	FM35	30,02
802002	FM55 / BM30 / BM40	51,51
802016	FM85 / BM70	45,30

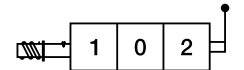
Accionamiento tipo 3 - enclavado 1 pos.



Spool control type 3 - 1 pos. detent

Actionnement type 3 - cranté 1 pos.

Azionamento tipo 3 - bloccaggio 1 posizione



Referencia Part n°	DISTRIBUIDOR CONTROL VALVE	€
802052	FM35	37,08
802003	FM55 / BM30 / BM40	40,15
802017	FM85 / BM70	57,38

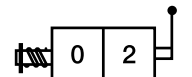
Accionamiento tipo 4 - 2 posiciones



Spool control type 4 - 2 pos.

Actionnement type 4 - 2 pos.

Azionamento tipo 4 - 2 posizioni



Referencia Part n°	DISTRIBUIDOR CONTROL VALVE	€
802057	FM35	17,80
802004	FM55 / BM30 / BM40	19,81
802018	FM85 / BM70	25,14

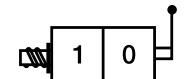
Accionamiento tipo 5 - 2 posiciones



Spool control type 5 - 2 pos.

Actionnement type 5 - 2 pos.

Azionamento tipo 5 - 2 posizioni



Referencia Part n°	DISTRIBUIDOR CONTROL VALVE	€
802058	FM35	17,80
802005	FM55 / BM30 / BM40	19,81

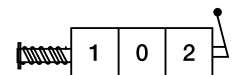
Accionamiento tipo 6 - 2 pos. extremas



Spool control type 6 - 2 extreme pos.

Actionnement type 6 - 2 pos. extrêmes

Azionamento tipo 6 - 2 posizione estreme



Referencia Part n°	DISTRIBUIDOR CONTROL VALVE	€
802059	FM35	20,34
802006	FM55 / BM30 / BM40	19,81

DISTRIBUIDORES HIDRÁULICOS

Hydraulic directional control valves

Distributeurs hydrauliques

Distributori idraulici

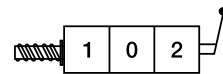
Accionamiento tipo 7 - 2 pos. extremas



Spool control type 7 - 2 extreme pos.

Actionnement type 7 - 2 pos. extrêmes

Azionamento tipo 7 - 2 posizione estreme



Referencia Part n°	DISTRIBUIDOR CONTROL VALVE	€
802060	FM35	17,80
802007	FM55 / BM30 / BM40	19,81
802021	FM85 / BM70	22,17

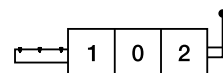
Accionamiento tipo 8 - enclavado 3 pos.



Spool control type 8 detent 3 pos.

Actionnement type 8 - cranté 3 pos.

Azionamento tipo 8 - bloccaggio 3 posizioni



Referencia Part n°	DISTRIBUIDOR CONTROL VALVE	€
802050	FM35	25,08
802008	FM55 / BM30 / BM40	27,24
802022	FM85 / BM70	37,13

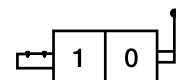
Accionamiento tipo 9 - 2 pos.



Spool control type 9 detent 2 pos.

Actionnement type 9 - cranté 2 pos.

Azionamento tipo 9 - 2 posizioni



Referencia Part n°	DISTRIBUIDOR CONTROL VALVE	€
802085	FM35	30,51
802009	FM55 / BM30 / BM40	29,26
560283	FM85 / BM70	75,98

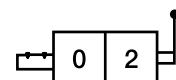
Accionamiento tipo 10 - 2 pos.



Spool control type 10 detent 2 pos.

Actionnement type 10 - cranté 2 pos.

Azionamento tipo 10 - 2 posizioni



Referencia Part n°	DISTRIBUIDOR CONTROL VALVE	€
802086	FM35	30,51
802010	FM55 / BM30 / BM40	32,52
802024	FM85 / BM70	26,43

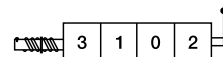
Accionamiento tipo 16 - 4 pos. flotante



Spool control type 16 for 4th pos. floating spool

Actionnement type 16 pour tiroir avec 4eme pos. flottante

Azionamento tipo 16 - 4 posizione flotante



Referencia Part n°	DISTRIBUIDOR CONTROL VALVE	€
802061	FM35	79,34
802099	FM55 / BM30 / BM40	136,28

Requiere cuerpo distribuidor especial / Required special body / Besoin de cavité spécifique / E' rchiesto corpo distributore speciale

DISTRIBUIDORES HIDRÁULICOS

Hydraulic directional control valves

Distributeurs hydrauliques

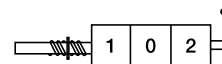
Distributori idraulici

Accionamiento tipo 1DC - 3 pos. para leva

Spool control type 1DC - 3 pos. for lever

Actionnement type 1DC - 3 pos. pour levier

Azionamento tipo 1DC - 3 posiz. Per leva



Referencia Part n°	DISTRIBUIDOR CONTROL VALVE	€
802109	FM35	53,92
802076	FM55 / BM30 / BM40	90,52
802097	FM85 / BM70	116,62

Accionamiento tipo 1F -3 pos. para sirga

Spool control type 1F - 3 pos. for cable

Actionnement type 1F - 3 pos. pour cable

Azionamento tipo 1F-3 posiz. Per cavo



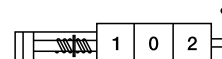
Referencia Part n°	DISTRIBUIDOR CONTROL VALVE	€
802132	FM35	104,63
802070	FM55 / BM30 / BM40	88,03
802096	FM85 / BM70	88,22

Accionamiento neumático tipo 1P - 3 pos.

Pneumatic control type 1P -3 pos.

Actionnement pneumatique type 1P - 3 pos.

Azionamento pneumatico tipo 1P-3 posizioni



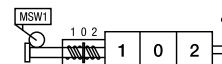
Referencia Part n°	DISTRIBUIDOR CONTROL VALVE	€
802064	FM55 / BM30 / BM40	317,27
802065	FM85 / BM70	283,36

Microrruptor S.E. - corredera V

Microswitch control S.A spool V

Microrrupteur S.E. tiroir V

Microinterruttore S.E. - cursore V



Referencia Part n°	DISTRIBUIDOR CONTROL VALVE	€
802095	FM85 / BM70	92,53

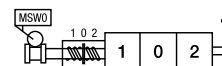
Hasta fin de existencias / Until end of stock / Jusqu'à la fin du stock / Fino ad esaurimento

Microrruptor D.E. protección agua

Microswitch control D.A. water protection

Microrrupteur D.E. protection d'eau

Microinterruttore D.E. - protezione acqua



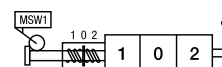
Referencia Part n°	DISTRIBUIDOR CONTROL VALVE	€
802173	FM35	127,16
802176	FM55 / BM30 / BM40	147,09

Microrruptor S.E. cor. V -protección agua

Microswitch S.A. spool V-water protection

Microrrupteur S.E. tiroir V - protection d'eau

Microinterruttore S.E. cursore V - protezione acqua



Referencia Part n°	DISTRIBUIDOR CONTROL VALVE	€
802174	FM35	145,44
802177	FM55 / BM30 / BM40	174,52

DISTRIBUIDORES HIDRÁULICOS

Hydraulic directional control valves

Distributeurs hydrauliques

Distributori idraulici

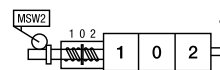
Microrruptor S.E. cor. S -protección agua



Microswitch control S.A. spool S-water protection

Microrupteur S.E. tiroir S - protection d'eau

Microinterruttore S.E. cursore S - protezione acqua



Referencia Part n°	DISTRIBUIDOR CONTROL VALVE	€
802175	FM35	139,83
802178	FM55 / BM30 / BM40	174,52

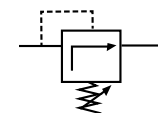
Válvula limitadora



Relief valve

Limiteurs de pression

Valvola limitatrice



Referencia Part n°	CAMPO REG. (bar) REG. RATE (bar)	DISTRIBUIDOR CONTROL VALVE	€
803057	10 - 90	FM35	52,86
803058	100 - 250	FM35	50,85
803061	100 - 250	FM55 / BM30 / BM40	67,45
803064	100 - 250	FM85 / BM70	72,18

Muelles para válvula limitadora



Springs for relief valve

Ressort pour limiteur

Molle per valvola limitatrice

Referencia Part n°	CAMPO REG. (bar) REG. RATE (bar)	DISTRIBUIDOR CONTROL VALVE	€
200071	10 - 90	FM55 / BM30 / BM40	3,84
200068	100 - 250	FM55 / BM30 / BM40	3,84
200073	150 - 300	FM55 / BM30 / BM40	3,84

Tapón para anulación válvula limitadora



Plug for relief valve cavity

Bouchon pour annulation valve limiteur pression

Tappo per annullamento valvola limitatrice

Referencia Part n°	DISTRIBUIDOR CONTROL VALVE	€
832018	FM35	24,03
832010	FM55 / BM30 / BM40	23,79
832012	FM85 / BM70	30,84

Racor de continuación de presión



Carry over fitting

Raccord centre à suivre

Raccordo di continuazione linea pressione

Referencia Part n°	ROSCA THREAD	DISTRIBUIDOR CONTROL VALVE	€
832019	3/8" BSP	FM35	20,80
832004	1/2" BSP	FM55 / BM30 / BM40	23,13
832015	3/4" BSP	FM85 / BM70	35,59

DISTRIBUIDORES HIDRÁULICOS

Hydraulic directional control valves

Distributeurs hydrauliques

Distributori idraulici



Tapón centro cerrado

Closed center plug

Bouchon pour centre fermé

Tappo centro chiuso

Referencia Part n°	ROSCA THREAD	DISTRIBUIDOR CONTROL VALVE	€
832017	3/8" BSP	FM35	17,80
832007	1/2" BSP	FM55 / BM30 / BM40	20,34
832013	3/4" BSP	FM85 / BM70	51,86



Soporte palanca (sin palanca)

Hold lever

Support levier (sans levier)

Supporto leva (senza leva)

Referencia Part n°	ROSCA THREAD	DISTRIBUIDOR CONTROL VALVE	€
801025	M8	FM35	17,77
801035	M8	FM55 / BM30 / BM40	19,64
801036	M10	FM85 / BM70 / BM150	20,73

Palanca (sin accionamiento)

Lever

Levier (sans actionnement)

Leva (senza azionamento)



Referencia Part n°	ROSCA THREAD	DISTRIBUIDOR CONTROL VALVE	€
560025	M8	FM35	3,28
560026	M8	FM55 / BM30 / BM40	3,16
560027	M10	FM85	4,15

DISTRIBUIDORES HIDRÁULICOS

Hydraulic directional control valves

Distributeurs hydrauliques

Distributori idraulici

Sirga para distribuidores



Cable for hydraulic control valves

Cables pour distributeur

Cavo per distributori idraulici

Referencia Part n°	LONGITUD (mm) LENGTH (mm)	€
023041	1.000	54,26
023038	1.250	45,43
023042	1.500	47,05
023043	2.000	53,56
023044	2.500	60,02
023045	3.000	74,04
023047	3.500	78,64
023048	4.000	80,71
023049	4.500	88,78
023050	5.000	95,70
023051	5.500	98,43
023052	6.000	103,52

Kit Montaje cable distribuidor



Cable adaptor

Kit d'adaptation pour câble

Kit montaggio cavo distributore

Referencia Part n°	DISTRIBUIDOR CONTROL VALVE	€
212076	Nimco CV452	32,29
601022	Hydrocontrol HCD2	17,47
801022	FM35	53,39
801023	FM55 / BM30 / BM40	17,47
801024	FM85 / BM70	71,73
KITSIRGA102	ROQUET 102/1102 N1670/697	32,22
KITSIRGA402	ROQUET 402	19,71
KITSIRGA406	ROQUET 406 N6412/407	19,94

Joystick sobre distribuidor para 2 correderas



Joystick on control valve for 2 spools

Joystick pour 2 tiroirs - montage sur distrib.

Joysticks sopra distributore per due cursori

Referencia Part n°	DISTRIBUIDOR CONTROL VALVE	€
801291	BM70 / FM85	361,79
801120	FM55 / BM30 / BM40	292,38

Monomando para sirga - 1 corredera



Manual remote control - 1 spool

Manipulateur pour cable - 1 tiroir

Comando per cavo - 1 cursore

Referencia Part n°	DISTRIBUIDOR CONTROL VALVE	€
023040	TODOS/ALL	59,13

Monomando para sirga con bloqueo - 1 corredera



Manual remote control with block - 1 spool

Manipulateur pour cable avec blocage - 1 tiroir

Comando per cavo con blocco - 1 cursore

Referencia Part n°	DISTRIBUIDOR CONTROL VALVE	€
023039	TODOS/ALL	68,33

DISTRIBUIDORES HIDRÁULICOS

Hydraulic directional control valves

Distributeurs hydrauliques

Distributori idraulici



Joystick para 2 sirgas - 2 correderas

Joystick remote control 2 cables - 2 spools

Joystick pour 2 cables - 2 tiroirs

Joystick per due cavi - 2 cursori

Referencia Part n°	DESCRIPCIÓN DESCRIPTION	DISTRIBUIDOR CONTROL VALVE	€
023023	Joystick sin bloqueo / without lock	Todos/All	162,27
023024	Joystick con bloqueo / with lock	Todos/All	179,85
MJ400	Con accionamiento electrico / with electric acting	Todos/All	238,61
ID3370	Ergonómico en codo, bloqueo vertical / Ergonomic bent design a/w vertical lock	Todos/All	162,27

JOYSTICK 2 SIRGAS CABLES CORREDERAS SPOOLS

PARA TODOS LOS DISTRIBUIDORES · FOR ALL CONTROL VALVES



023023



sin bloqueo
without lock



023024



con bloqueo
with lock



MJ400



sin bloqueo
without lock



ID3370



con bloqueo
with lock

TrAle®
ERGONOMIC